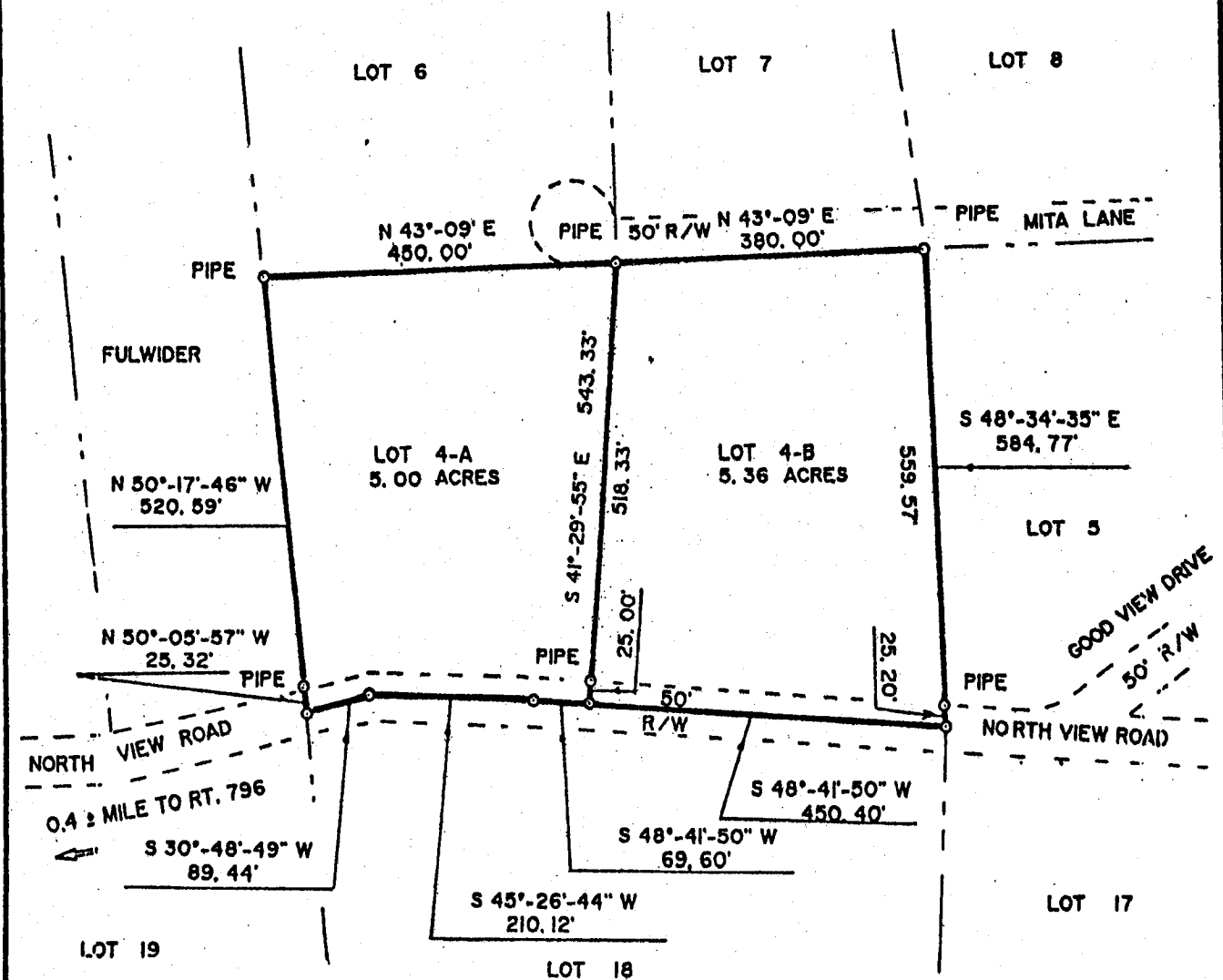
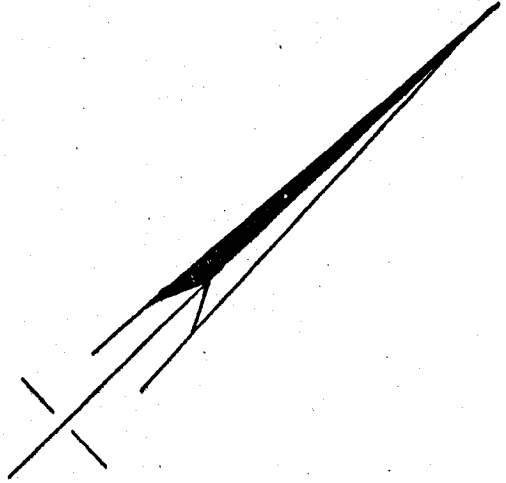


2696-96

BOOK 562 PAGE 272



APPROVED BY:  
*[Signature]*  
 DIRECTOR OF PLANNING  
 DATE: 7/3/96



**PLAT SHOWING**

DIVISION OF LOT 4 OF EAST VIEW SUBDIVISION  
 SURVEYED FOR BRUCE W. CLARK. SEE  
 PLAT IN PLAT CABINET I SLIDE 551.

SOUTH RIVER DISTRICT  
 ROCKBRIDGE COUNTY  
 SCALE 1" = 200'

VIRGINIA  
 MAY 7, 1993

JAMES DOUGLAS DORSEY  
 CERTIFIED LAND SURVEYOR  
 ROCKBRIDGE COUNTY, VIRGINIA

