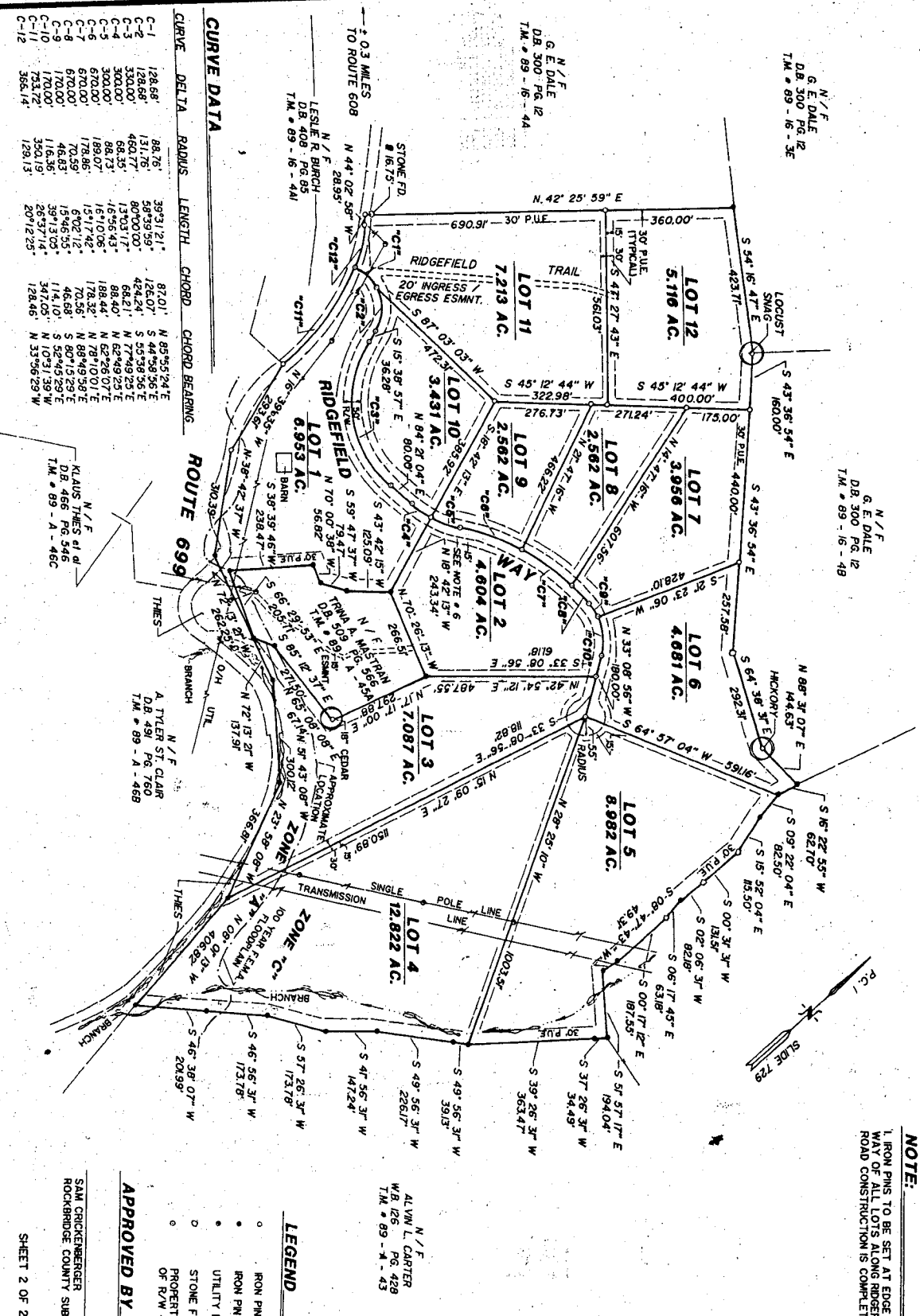


NOTE:
 1. IRON PINS TO BE SET AT EDGE OF 25' RIGHT OF WAY OF ALL LOTS ALONG RIDGEFIELD WAY AFTER ROAD CONSTRUCTION IS COMPLETED.

Virginia, In the Circuit Court of Rockbridge, June 13, 1997
 This plat showing property of Ridgefield, was this day presented to this office and admitted to recordation.

Attest
 Clerk



CURVE DATA

CURVE	DELTA	RADIUS	LENGTH	CHORD	CHORD BEARING
C-1	128.68'	88.76'	392.121'	87.01'	N 89° 55' 24\"
C-2	128.68'	131.76'	442.07'	126.07'	S 44° 59' 56\"
C-3	330.00'	80.00'	100.00'	424.24'	S 55° 38' 56\"
C-4	330.00'	460.14'	1370.317'	68.21'	N 77° 49' 25\"
C-5	300.00'	68.21'	165.643'	88.40'	N 62° 49' 25\"
C-6	300.00'	188.44'	1517.42'	188.44'	N 62° 49' 25\"
C-7	670.00'	178.86'	178.86'	70.56'	N 78° 10' 0\"
C-8	670.00'	70.56'	690.212'	70.56'	N 88° 49' 38\"
C-9	1700.00'	46.83'	1596.55'	46.83'	S 60° 13' 29\"
C-10	1700.00'	116.36'	3913.05'	116.36'	S 60° 13' 29\"
C-11	753.72'	350.19'	2637.14'	350.19'	N 76° 51' 39\"
C-12	366.14'	129.13'	2012.25'	128.48'	N 33° 56' 29\"

APPROVED BY
 SAM CROCKENGER
 ROCKBRIDGE COUNTY SUBDIVISION AGENT

DATE

SHEET 2 OF 2



PLAT SHOWING
"RIDGEFIELD"
 BUFFALO WARDEN DISTRICT
 COUNTY OF ROCKBRIDGE, VIRGINIA



200' 0' 200'
 GRAPHIC SCALE

DATE: APRIL 30, 1997

JOB: # 97031

282 EAST 28TH STREET
 BUENA VISTA, VA 22416

OFFICE: (540) 281-9000
 FAX: (540) 281-5009